



Diesel Auxiliary Power Units



PROVIDING THE COMFORT  
AND CONVENIENCE OF HOME



## PERFORMANCE SPECIFICATIONS

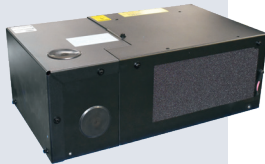
### APU Power Plant

Dimensions:  
24.2" x 26.8" x 30.7"  
(615 x 681 x 780 mm)  
Weight:  
395 lbs (179 kg)\*



### Under Bunk Climate Control Unit (CCU) with Climate Control Module (CCM)

Dimensions - CCU:  
26.1" x 15.7" x 9.4"  
(663 x 399 x 239 mm)  
Weight - CCU with CCM:  
76 lbs (35 kg)



### Condensing Unit

Dimensions:  
26.5" x 8" x 16.9"  
(673 x 203 x 429 mm)  
Weight:  
26 lbs (12 kg)

**Aspen Interface**  
Programmable control for air conditioning, heating, fan and more



**Provides the exceptional combination** of cooling, heating, cab power, battery charging, engine heating and more. Designed for high performance, versatility, durability, reliability and ease of use.

**For rugged service:** Uses marine-grade components and enhanced alloys for strength and corrosion resistance. Automotive-grade, IP67-rated electronics protect against sand, dust and water.

**Easy, intuitive climate control:** The Aspen Interface makes temperature management as effortless as a home thermostat. Illuminated knob to select cab temperature, supported by a backlit digital information display. Four climate control modes: **Automatic Comfort-Monitor, Heating, Cooling and Fan-only.**

**Added Versatility:** Aspen's standard feature set includes **Battery Monitor** mode to maintain battery charge, **Winter Watch™** mode for engine pre-heating, and **Manual Programming** mode, enabling automatic functionality based on user pre-sets.

**Customizable:** Expand capabilities via ancillary inverter, fuel-fired Carrier Cabin Heater, shore power module and more.

**Easily Serviceable:** Lightweight, corrosion-free, injection-molded housing cover secured with sturdy quick-release latches for easy access, even behind fairings. CabinTech PC software and USB connectivity make setup, service and troubleshooting faster and easier for technicians.

### Four Core Models

#### Integrated (Aspen-INT)

Our most fully featured system, its coolant lines connect to the tractor engine cooling system enabling engine warming via APU coolant exchange.

#### Integrated with DPF (Aspen-SKY)

Same as integrated model but includes ClearSky® diesel particulate filter (DPF).

#### Stand-alone (Aspen-STA)

Provides the same capabilities as the integrated model, but tractor and APU coolant systems are independent. Unique among stand-alone systems, tractor engine warming is achieved via the tractor's block heater, powered by the APU generator.

#### Power-only (Aspen-PWR)

Supplies power for hotel loads and can preheat the truck engine via coolant exchange. No cab climate control.

### Standard Features Include:

#### APU Power Plant

Tier 4 final 2-cylinder diesel engine  
High power 70 amp alternator  
Generator, 6 kW rating @ 110/120V,  
60Hz AC (5.2 kW available power)  
2000-hour service Interval

#### Under Bunk CCU

Airflow, 343 cfm  
Air Conditioning, 12,000 BTU/hr  
• Hermetic compressor  
• Refrigerant, R-134a  
Heating, 8,200 BTU/hr with  
standard electric heat

#### Condensing Unit

Microchannel condenser  
Maintenance-free fan motor

#### Aspen Interface

Single control knob with color LED for heat, cool, auto and fan-only  
Backlit LCD display screen  
Configurable modes:  
• Automatic Comfort Monitor  
• Battery Monitor  
• Winter Watch low-temperature start

#### Accessories and Options

Shore power option kit – lets the APU operate via 110/120-VAC household power  
Inverter – produces 120 VAC for hotel loads while moving  
Carrier Cabin Heater – 7,000 BTU/hr fuel-fired heater  
ClearSky® DPF  
Stand-alone heat shield kit

\*Weight shown is for Aspen-INT and Aspen-PWR models. Aspen-STA and Aspen-SKY models differ.

Specifications are subject to change without notice.

Warranty: Product warranty and limitations are outlined in Form 62-12241.

This warranty is applicable only in North America. Consult your Carrier Transcold representative for warranty coverage elsewhere. Form 62-12240 Rev. B.

**North America**  
Carrier Transcold  
700 Olympic Drive  
Athens, GA 30601 USA

**Central America and Mexico**  
Carrier Transcold  
Ejercito Nacional 253-A Piso 5  
Colonia Anahuac  
11320 Mexico D.F.



www.trucktrailer.carrier.com

©2022 Carrier. All Rights Reserved. Printed in USA 12/22.

Carrier, Carrier Transcold and Aspen are registered trademarks of Carrier Corporation.